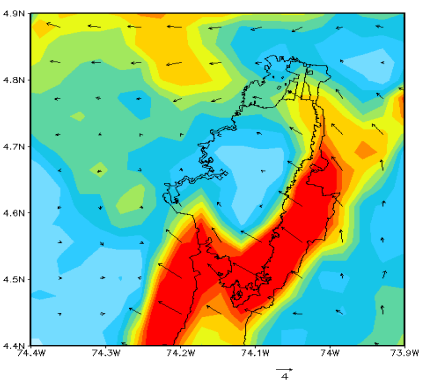
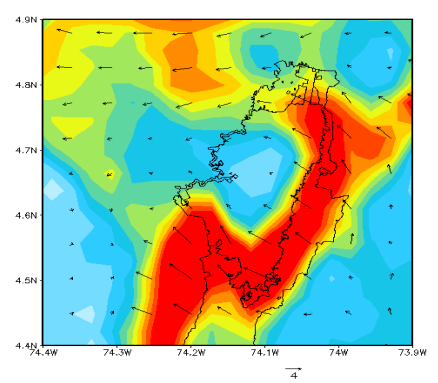
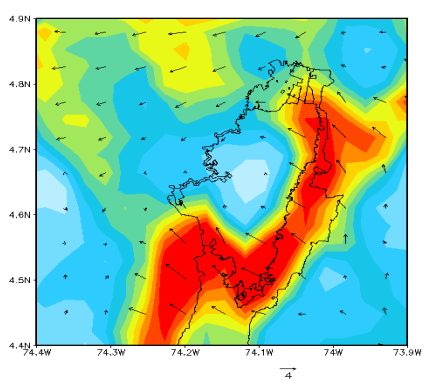
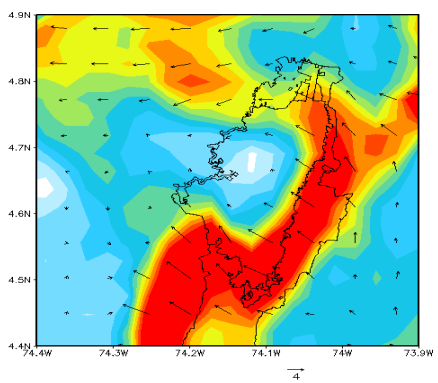
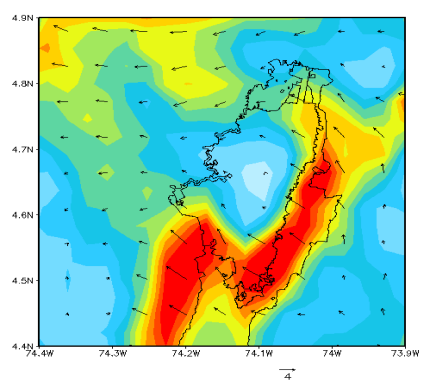
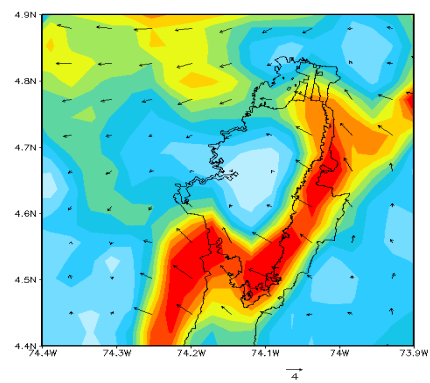
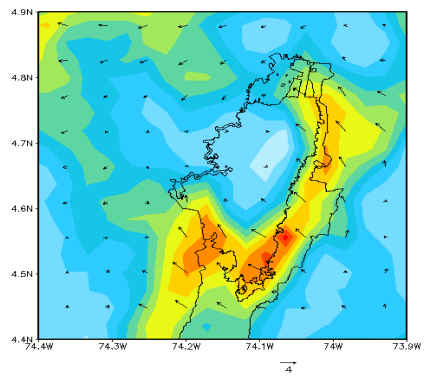
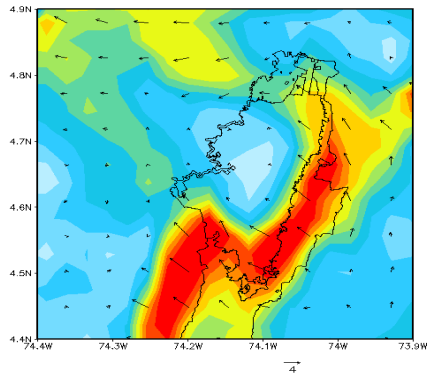


Figure SM1: Spatial distribution of 24-h averaged WRF-Chem model (RADM2 scheme) simulated surface temperature ($^{\circ}\text{C}$) over Bogota for selected PM₁₀ episodes. The left panel represents 04-05 Jan, 13-14 Jan, 15-16 Feb, 17-18 Feb, 12-13 Mar, 29-30 Jul of year 2010 and 09-10 Feb of year 2012 from the top down. Similarly, the right panel represents 05-06 Jan, 14-15 Jan, 16-17 Feb, 18-19 Feb, 13-14 Mar, 30-31 Jul of year 2010 and 10-11 Feb of year 2012 from the top down.



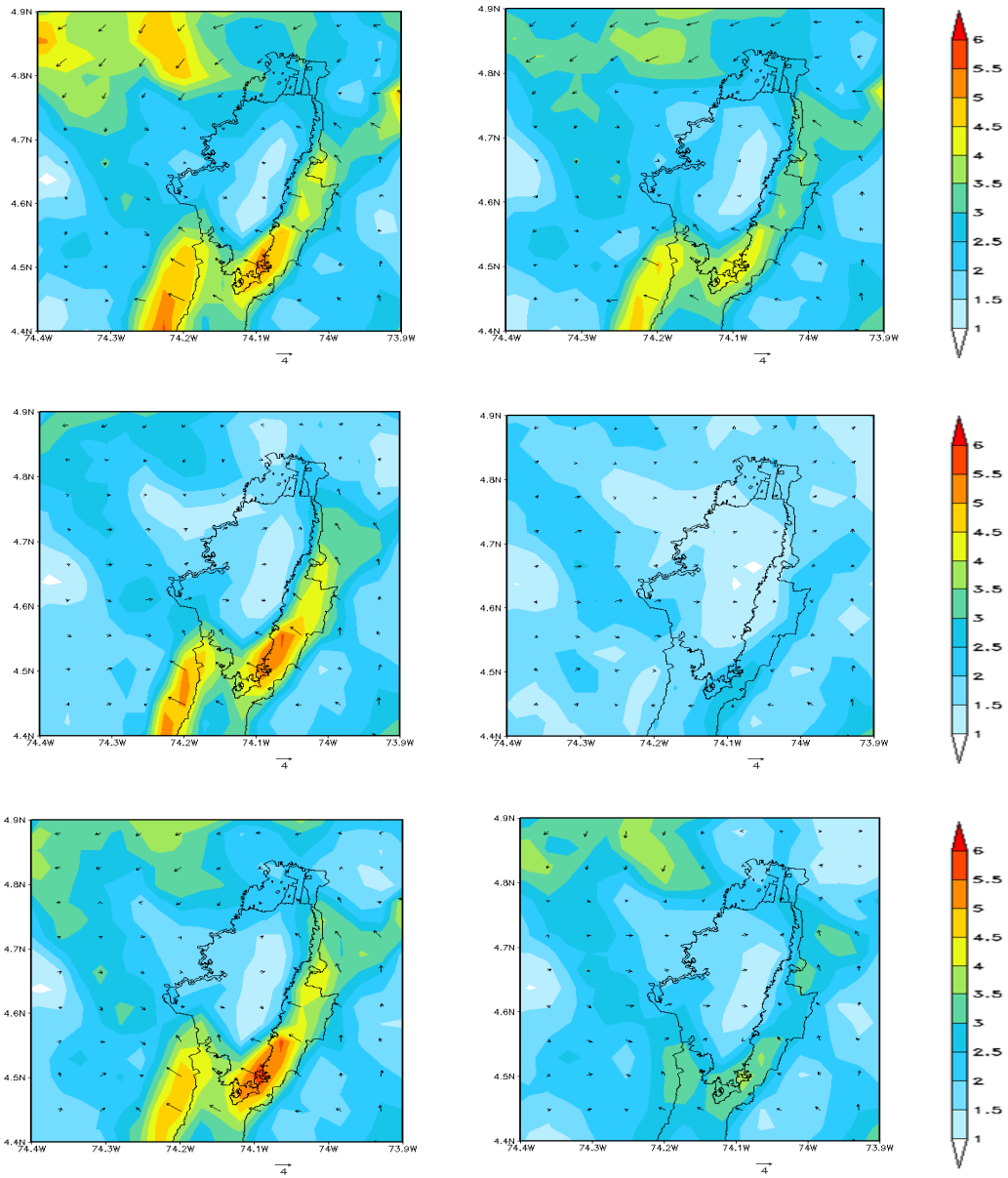
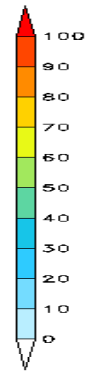
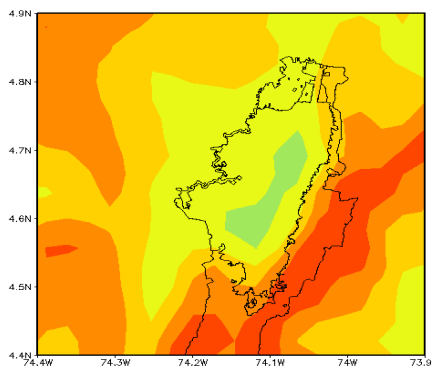
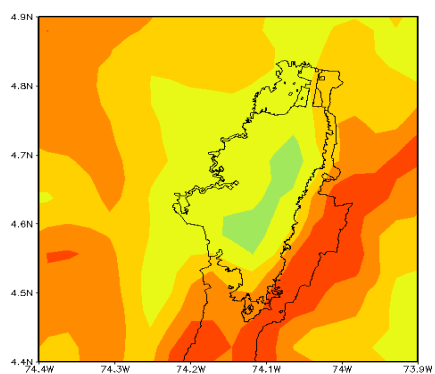
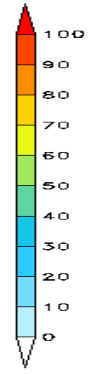
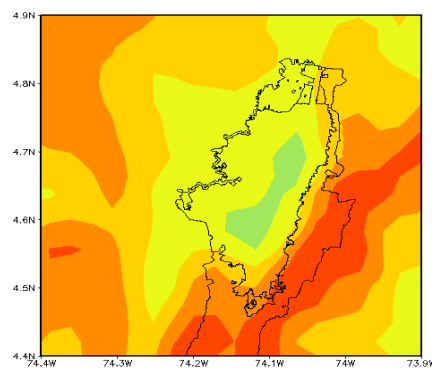
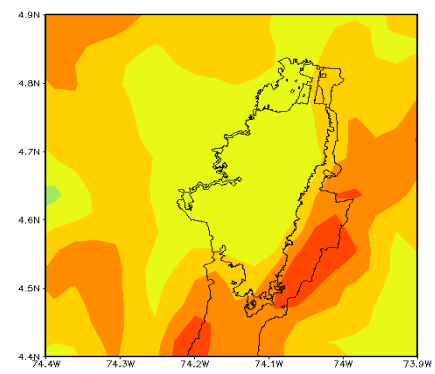
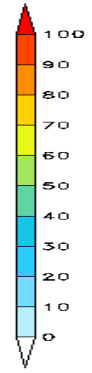
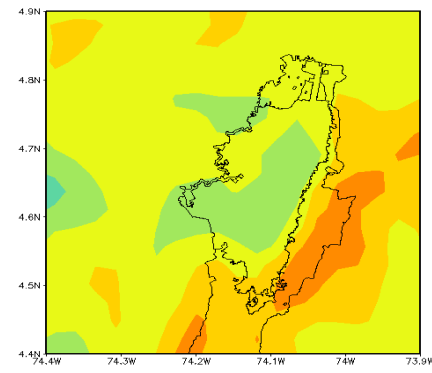
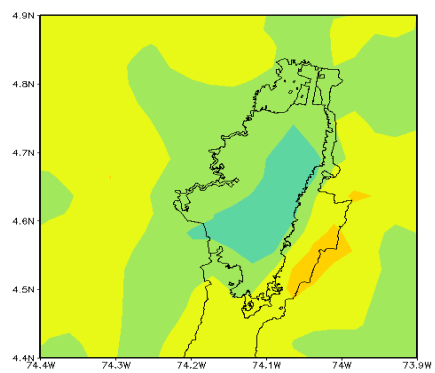
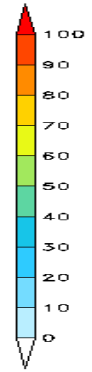
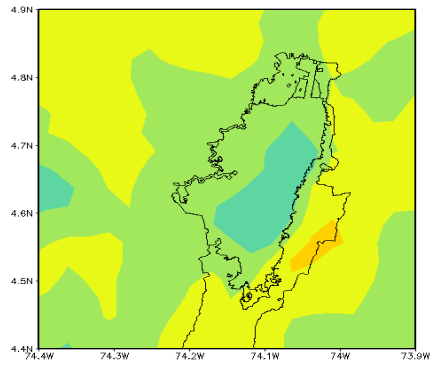
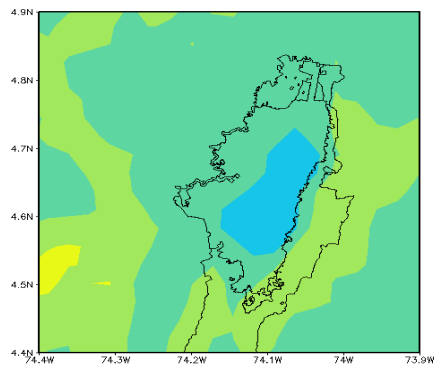


Figure SM2: Spatial distribution of 24-h averaged WRF-Chem model (RADM2 scheme) simulated surface wind field over Bogota for selected PM10 episodes. The left panel represents 04-05 Jan, 13-14 Jan, 15-16 Feb, 17-18 Feb, 12-13 Mar, 29-30 Jul of year 2010 and 09-10 Feb of year 2012 from the top down. Similarly, the right panel represents 05-06 Jan, 14-15 Jan, 16-17 Feb, 18-19 Feb, 13-14 Mar, 30-31 Jul of year 2010 and 10-11 Feb of year 2012 from the top down.



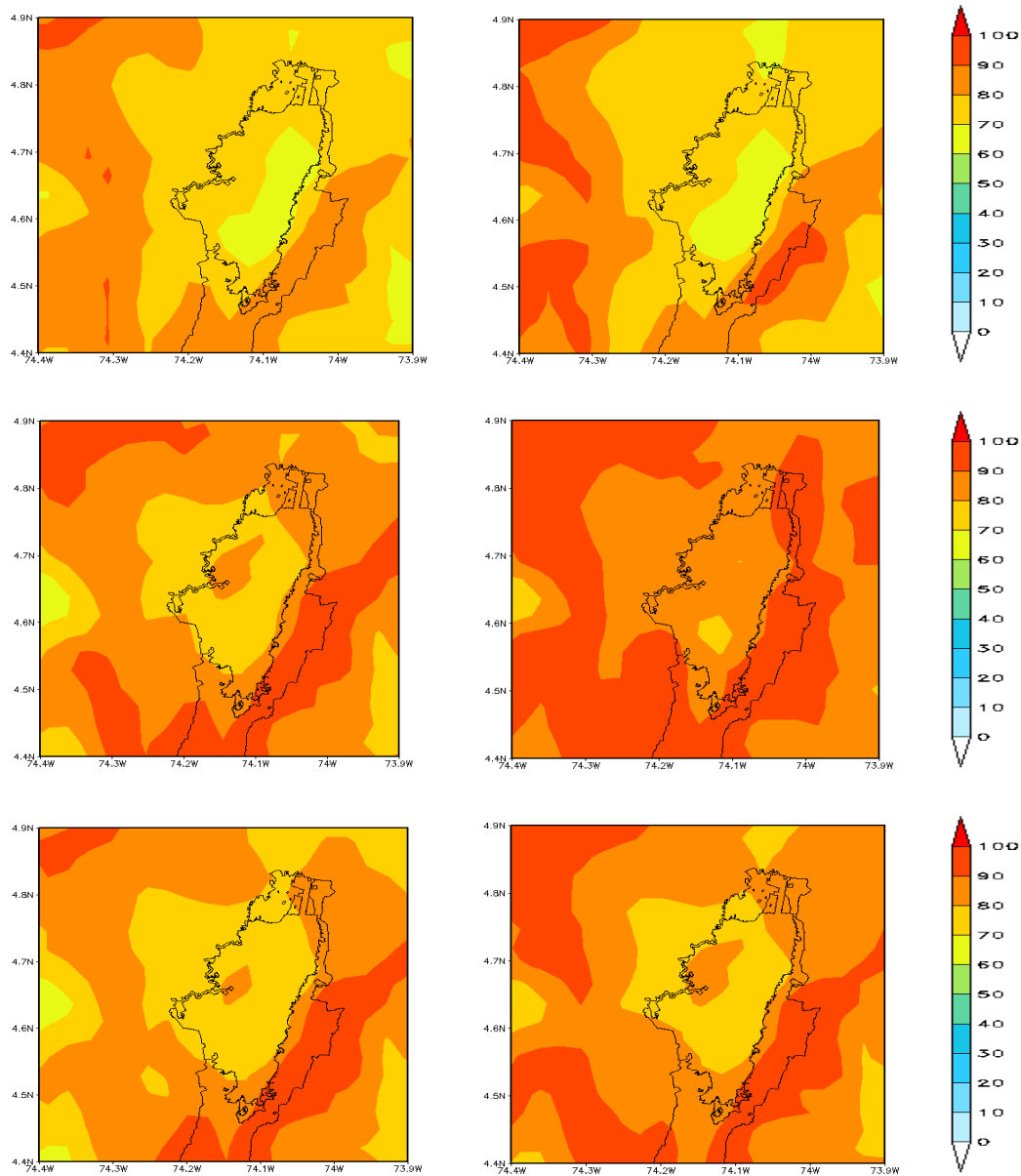


Figure SM3: Spatial distribution of 24-h averaged WRF-Chem model (RADM2 scheme) simulated surface relative humidity (%) over Bogota for selected PM10 episodes. The left panel represents 04-05 Jan, 13-14 Jan, 15-16 Feb, 17-18 Feb, 12-13 Mar, 29-30 Jul of year 2010 and 09-10 Feb of year 2012 from the top down. Similarly, the right panel represents 05-06 Jan, 14-15 Jan, 16-17 Feb, 18-19 Feb, 13-14 Mar, 30-31 Jul of year 2010 and 10-11 Feb of year 2012 from the top down.