

## Supplementary information of

“Atmospheric bulk deposition of PAHs over Brahmaputra Valley: characteristics and influence of meteorology”

Karishma Hussain<sup>1</sup>, Mirzanur Rahman<sup>2</sup>, Amit Prakash<sup>1</sup>, Kali Prasad Sarma<sup>1</sup>, Raza Rafiqul Hoque<sup>1</sup>

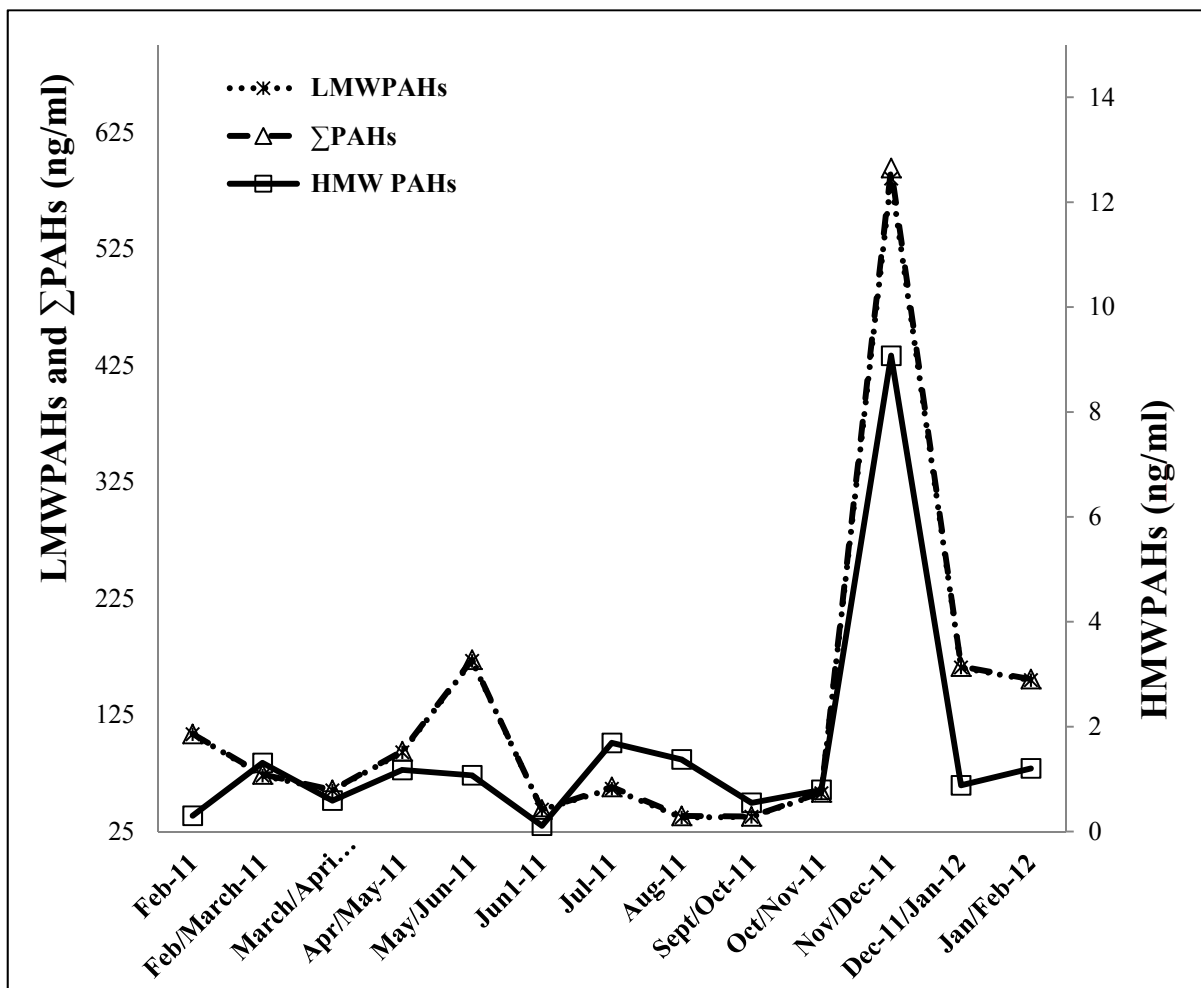
<sup>1</sup> *Department of Environmental Science, Tezpur University, Tezpur 784028, India*

<sup>2</sup> *Department of IT, Gauhati University, Guwahati 781014, India*

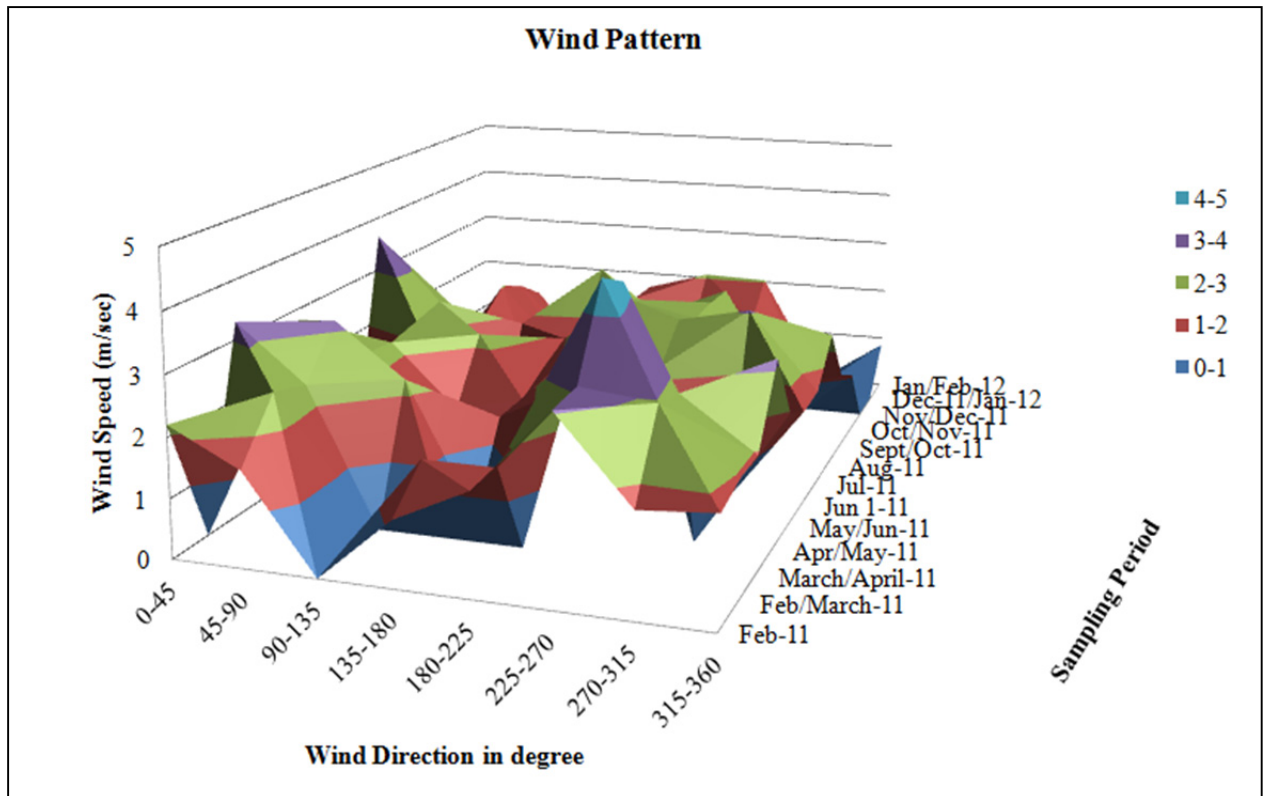
**Table S1**

Sampling periods and average monthly weather attributes

<b>Period</b>	<b>Monthly total rainfall (mm)</b>	<b>Mean monthly temp (°C)</b>	<b>Mean monthly RH(%)</b>
Feb-11	23.4	20.15	16.525
Feb/March-11	47.3	23.65	20.125
March/April-11	32.2	26.1	23.15
April/May-11	78.5	27.85	25.375
May/Jun-11	143.1	29.2	27.15
Jun1-11	171.5	29.5	27.55
Jul-11	182.7	29.35	27.325
Aug-11	421.7	29.1	27
Sept/Oct-11	227.4	27.65	24.975
Oct/Nov-11	5.2	21.6	18.4
Nov/Dec-11	1.5	18.6	15.3
Dec-11/Jan-12	9.6	16.55	13.525
Jan/Feb-12	9.7	19.7	15.55



**Fig. S1.** Monthly variation of LMW PAHs, HMW PAHs and  $\Sigma$ PAHs concentration in bulk deposition samples.



**Fig.S2.**Wind pattern during sampling period.