

Supplementary Material

Regional characteristics of air pollutants during heavy haze in the Yangtze River Delta, China

Honglei Wang^{1*}, Bin Zhu¹, Lijuan Shen², Honghui Xu³, Junlin An¹, Chen Pan¹, Yue'e Li⁴, Duanyang Liu⁵

1. Key Laboratory of Meteorological Disaster, Ministry of Education(KLME), Joint International Research Laboratory of Climate and Environment Change(ILCEC), Collaborative Innovation Center on Forecast and Evaluation of Meteorological Disasters, Key Laboratory for Aerosol-Cloud-Precipitation of China Meteorological Administration, Nanjing University of Information Science & Technology, Nanjing 210044, China
2. Jiaxing Environmental Monitoring Station, Jiaxing 314000, China
3. Zhejiang Institute of Meteorological Sciences, Hangzhou 310008, China
4. Suzhou Environmental Monitoring Station, Suzhou 215004, China
5. Wuxi Meteorological Observatory of Jiangsu Province, Wuxi 214101, China

*Corresponding author:

Phone: 0086-2558731592

E-mail: hongleiwang_2009@163.com

Table S1 Correlation between the PM_{2.5} and trace gases during observation period

	SO ₂	NO ₂	CO	O ₃	O ₃ +NO ₂
Nanjing	0.42**	0.57**	0.66 **	-0.11**	0.35**
Wuxi	0.50**	0.69**	--	0.06	0.54**
Suzhou	0.43 **	0.58**	0.52**	-0.21**	0.37**
Huzhou	0.49**	0.65**	0.72**	-0.24**	0.34**
Jiaxing	0.49**	0.69**	0.44*	-0.30**	0.31**
Lin'an	0.44**	0.67**	0.72**	-0.10**	0.51**
Hangzhou	0.48**	0.60**	0.64**	0.01	0.36*
Shaoxing	0.49**	0.61**	0.70**	-0.32**	0.38**
Ningbo	0.71**	0.67**	0.77**	-0.37**	0.23**
Zhoushan	0.69**	0.67**	0.75**	-0.23**	0.33**

-- Missing

* Significant at 0.05 level

** Significant at 0.01 level

Pressure and Horizontal Wind Field at surface NCEP

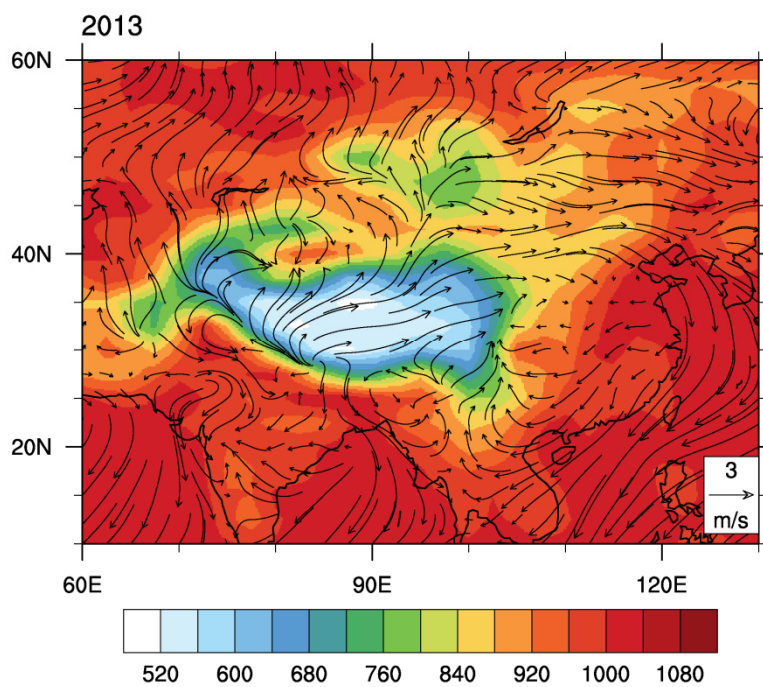


Figure S1 The pressure and wind fields in January 2013

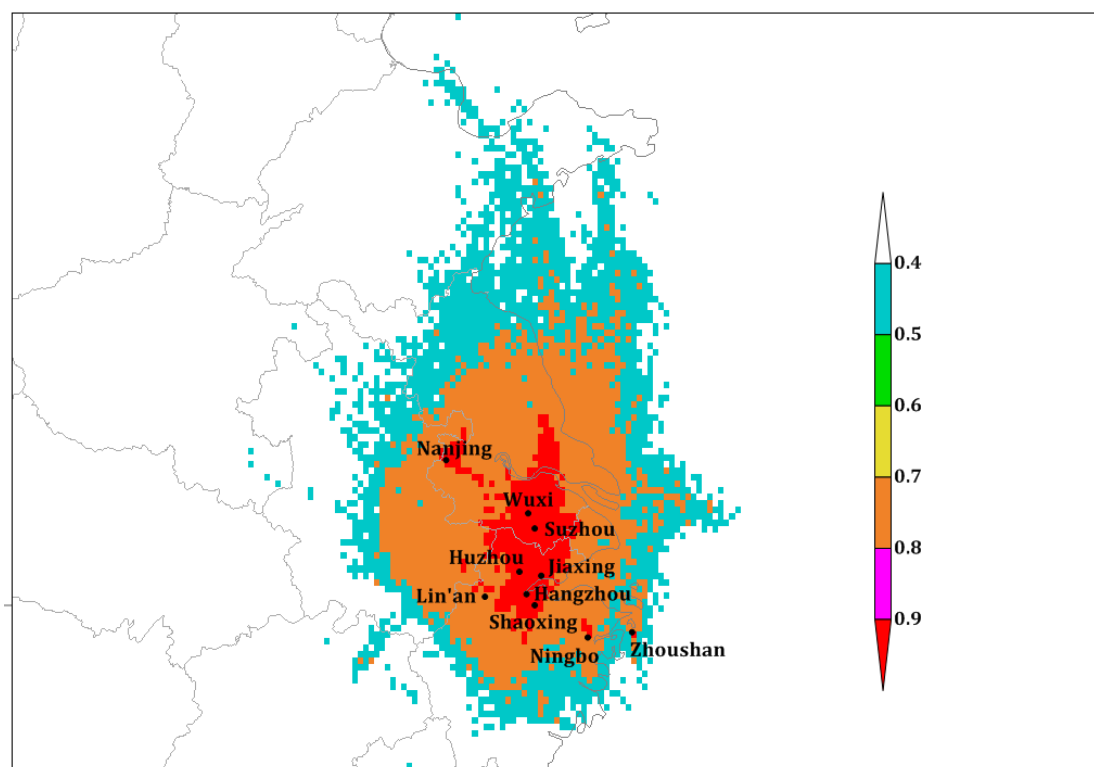


Figure S2 SO₂ distributions of the PSCF analysis by 48 h back-trajectory at a height of 500 m

during observation period

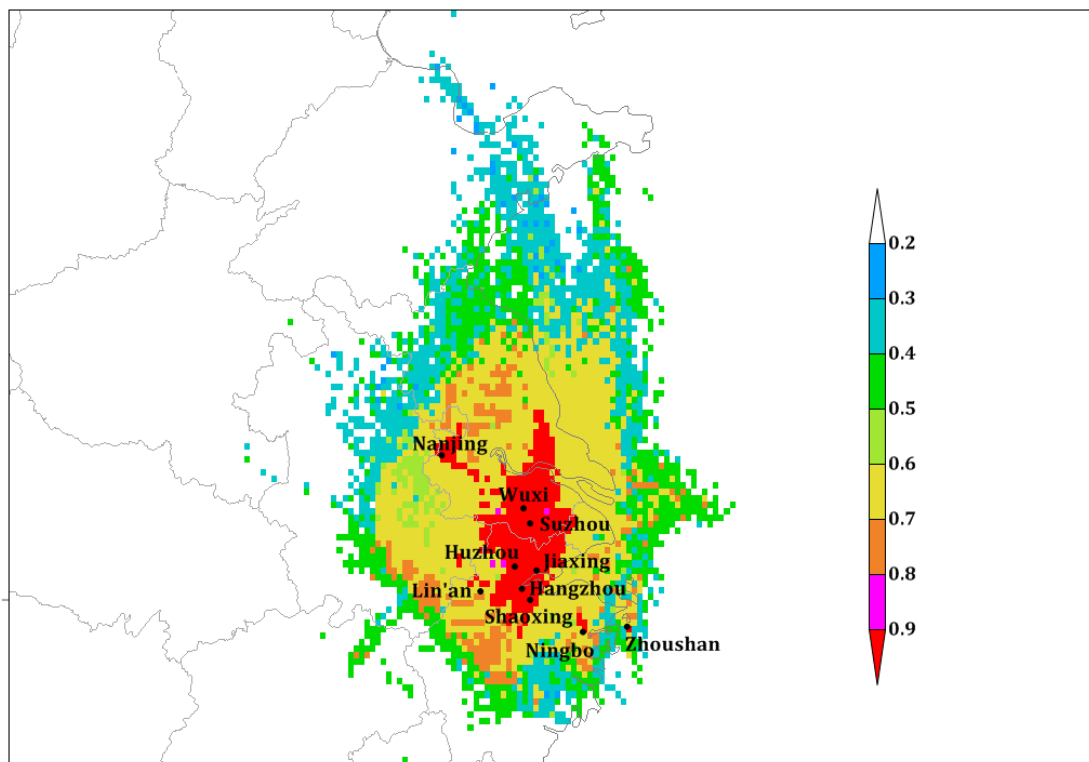


Figure S3 NO₂ distributions of the PSCF analysis by 48 h back-trajectory at a height of 500 m during observation period

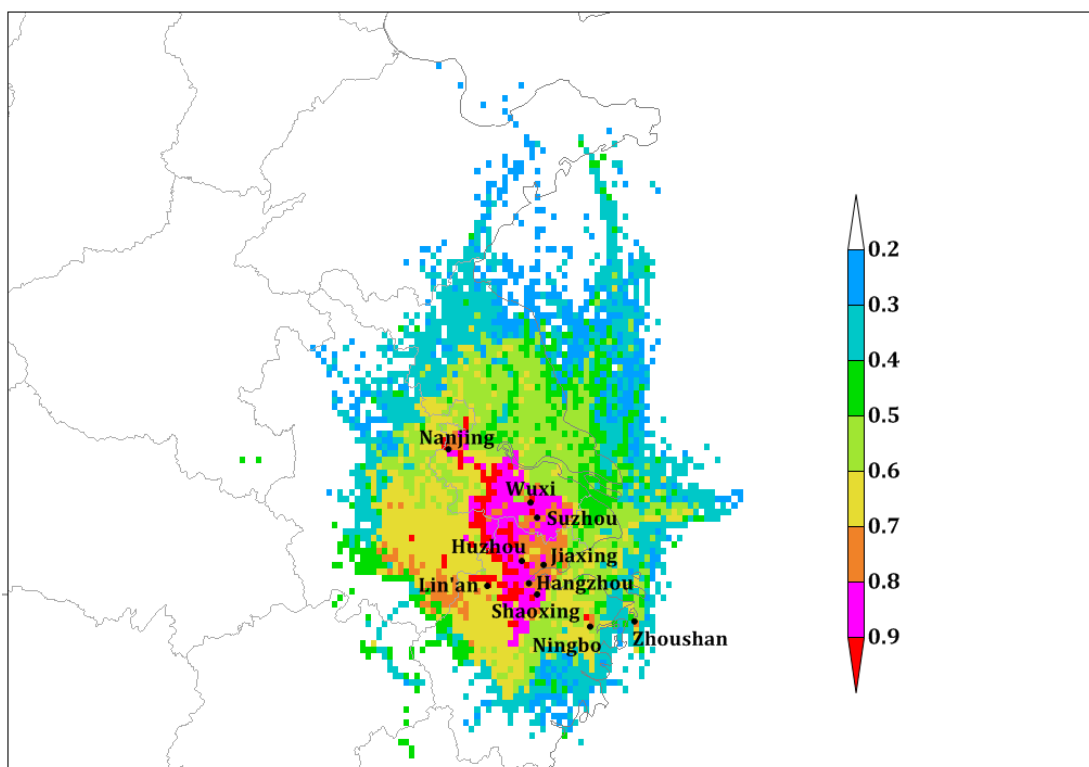


Figure S4 CO distributions of the PSCF analysis by 48 h back-trajectory at a height of 500 m

during observation period

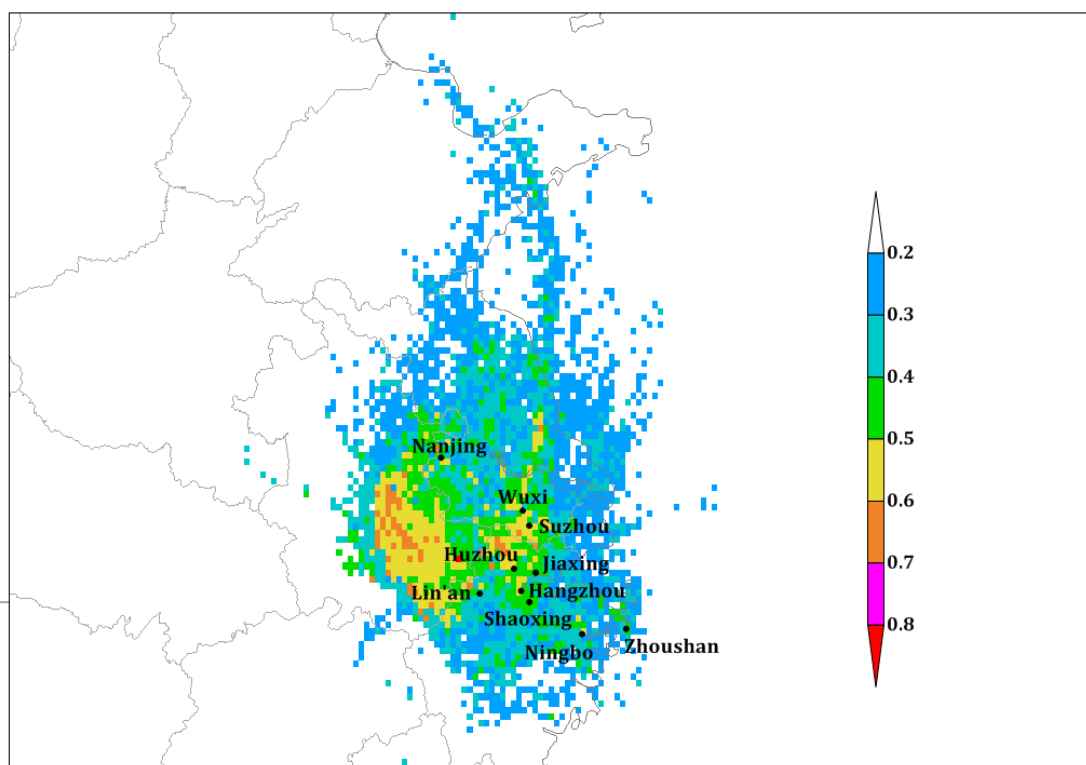


Figure S5 O₃ distributions of the PSCF analysis by 48 h back-trajectory at a height of 500 m

during observation period

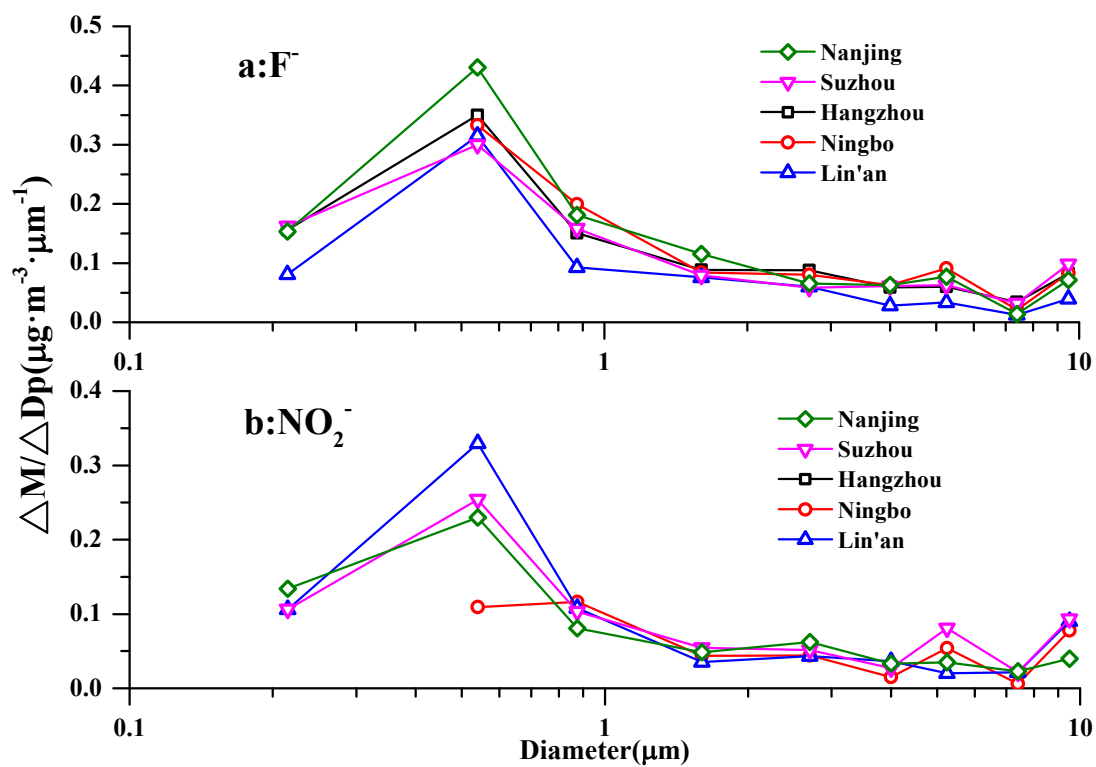


Figure S6 Spectral distributions of F⁻ and NO₂⁻ in different cities